

# Renal function improving agent

Drug repositioning of Lubiprostone  
Exploratory P2 is over!

## Overview

Toxin adsorbents such as SGLT2 inhibitors and cremedin have been used as pharmacotherapy for kidney disease. Lubiprostone, which is also used as a constipation drug, was shown to be effective as a treatment for chronic kidney disease (CKD).

Lubiprostone was also found to suppress the decline in renal function.

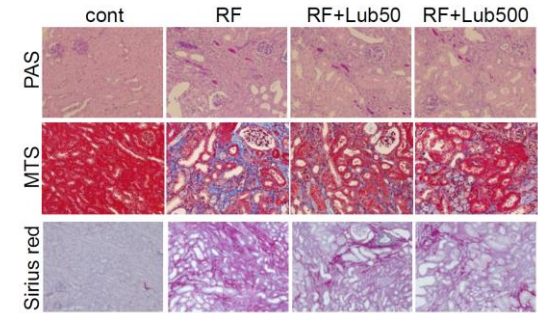
In an investigator-initiated clinical trial, the inventors conducted an exploratory study to investigate the efficacy and safety of 8 µg/day and 16 µg/day of lubiprostone in reducing renal function in patients with chronic kidney disease, using a placebo control. (The results can be disclosed under individual contracts.)

## Product Application

- ❑ Renal function improving agent
- ❑ Therapeutic agent for chronic kidney disease

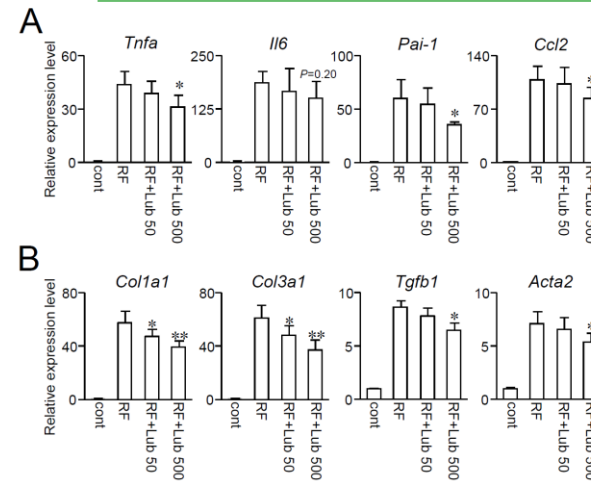
## IP Data

IP No. : JP6090723  
Inventor : ABE Takaaki  
Admin No. : T13-090



Renal fibrosis reduced in Lubiprostone group

## Features • Outstandings



Levels of renal failure markers were significantly reduced in the Lubiprostone group.

## Related Works

J Am Soc Nephrol  
. 2015 Aug;26(8):1787-94. doi: 10.1681/ASN.2014060530. Epub 2014 Dec 18.

## Contact